

## **ERRATA**

### **Notes regarding the Kachess Safety of Dams Project Environmental Assessment**

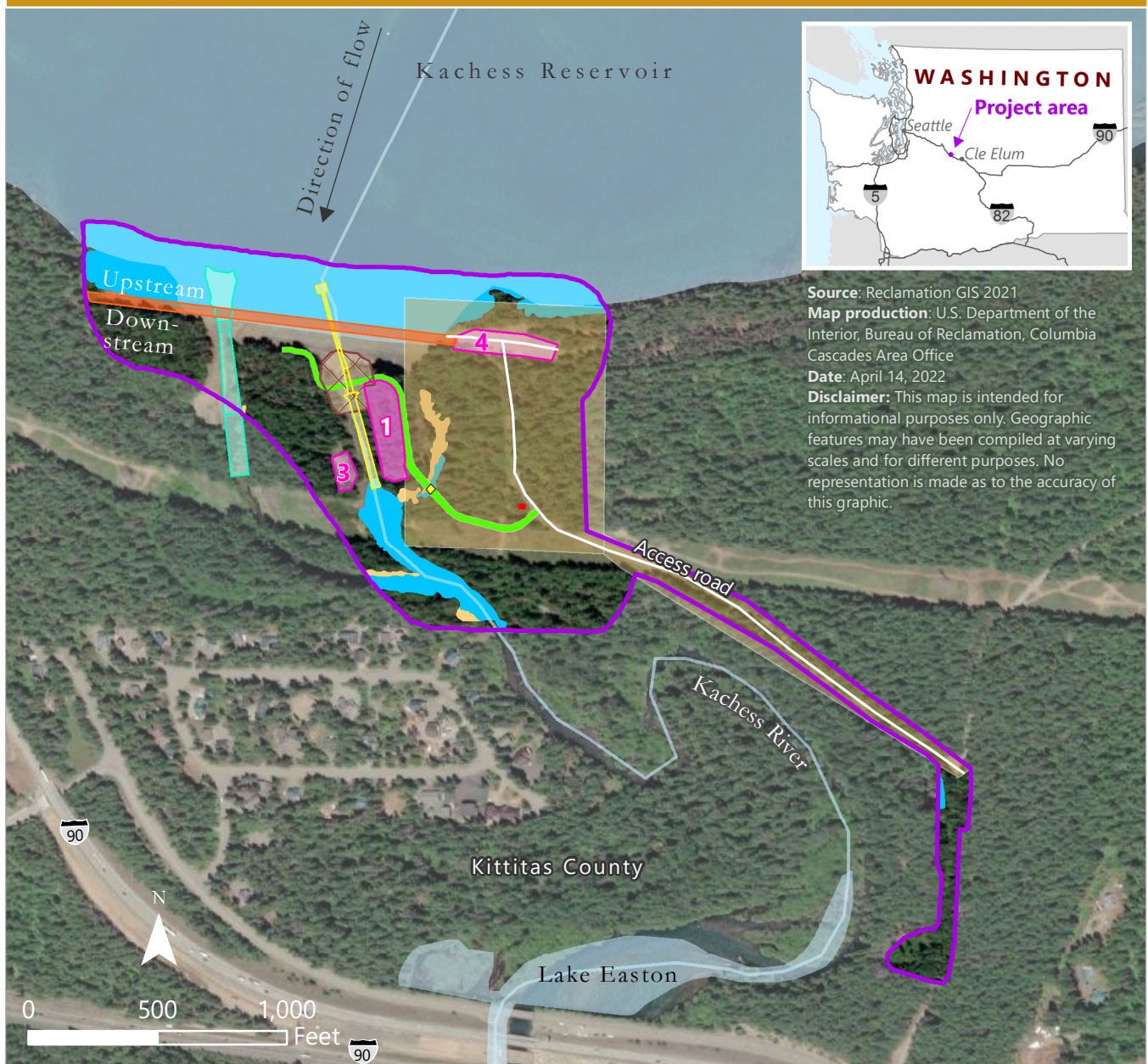
After preparation and publication of the Kachess Dam Safety of Dams Modification Project final environmental assessment, the Bureau of Reclamation found an error in the final EA. This error was found after the final EA and finding of no significant impact was completed; the error is corrected here in this online PDF format. The change noted below remains consistent with existing explanations and analyses elsewhere in the document.

In Chapter 3 under the cumulative effects analysis, the text references Figure 3-1, Cumulative Effects in the project area. During the public comment period, a commenter requested that the figure include the locations of the wetland, standing pond, and side channel streams and that the EA discuss impacts or how impacts will be avoided. The map should have been updated to include these features. It has been updated now to include those requested features, as shown here and in Appendix A of the EA.



BUREAU OF  
RECLAMATION

Figure 3-1  
Cumulative Effects



Source: Reclamation GIS 2021

Map production: U.S. Department of the Interior, Bureau of Reclamation, Columbia Cascades Area Office

Date: April 14, 2022

Disclaimer: This map is intended for informational purposes only. Geographic features may have been compiled at varying scales and for different purposes. No representation is made as to the accuracy of this graphic.

Proposed permanent infrastructure

- Fish passable culvert
- Electric building
- Access road
- Outlet works
- Operation and maintenance area
- Stability berm

- Buried belowground electric line (location shared with existing access road)
- Kachess Drought Relief Pumping Plant potential proposed project area
- Open water
- Wetland

Existing permanent infrastructure, no structural or operational changes

- Dam
- Spillway
- Operation and maintenance area
- Access road
- Project area